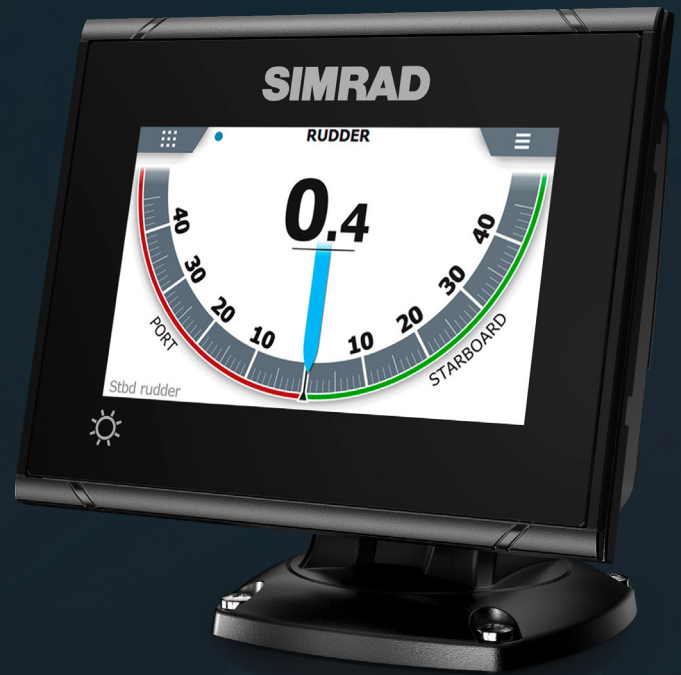


# I3005 & I3007

## Professional Instrument Series

The Simrad® I3005 & I3007 Instruments offer superior colour displays with easy touch control, a variety of graphic layouts and the capability to enable up to eight different instrument pages.

The I3005 & I3007 have several pre-defined page layouts that can be customized plus several blank templates for displaying the available data required, on a clear and crisp display.



### I3000 Series Instrument page configurations

- **Heading Repeater** - Paired with an NMEA 2000®, NMEA 0183® or LWE Heading Sensor, such as a Simrad® GPS Compass or Gyro System
- **Rudder Indicator** - IMO Approved Rudder Indicator when connected to an appropriate rudder feedback source AP70 MK2 Autopilot System, NMEA 2000®, NMEA 0183® or LWE network sensors, or a voltage / current / frequency analog signal source
- **Rate of Turn Indicator** - IMO Approved (7") - ROT Indicator with configurable range scale. Compatible with Simrad® GPS Compasses like HS60, HS75, HS80A, MX575D, and Simrad® Gyro Systems GC80 or GC85
- **Propeller Pitch Indicator\*** - IMO Approved
- **Propeller RPM Indicator\*** - IMO Approved
- **Engine RPM Indicator\*** - Selectable Scale Range from 200 to 10 000 RPM
- **Wind Instrument** - Displaying True Wind Speed and Angle, Apparent Wind Speed and Angle, Beaufort Wind Speed Indicator with Selectable Orientations (relative to North or the Ships' Bow). Compatible with any NMEA 2000® or NMEA 0183® Wind Sensors
- **Digital Data Pages** - Configurable page layouts for displaying any compatible connected data source on the instrument. Depth, Speed, Heave, Pitch, Roll, Time & Date, Temperature etc.

*\*Note: Transducer/Sensor not offered by Navico®*

# Key Features

- Flexible and multiple functions in one display unit
- Configurable as dedicated or multi-purpose display
- Supports enabling up to 8 different instrument pages
- Touch display - Switch easily between instrument pages
- Analog Signal Input - Supports all common types
- Data Bridge - Converts data between NMEA 2000®, NMEA 0183® and LWE Ethernet
- 2x NMEA 0183® Ports - 4800 to 38400 Baud Rates

# Specifications

## DISPLAY

Resolution	800 x 480
Brightness	> 1200 nits
Touch Screen	Full touch screen (multi-touch)
Viewing angles (typical value at contrast ratio = 10)	Left/right: 700, top: 500, bottom: 600

## ELECTRICAL

Supply voltage	12/24 V DC (9.0-31.2 V DC min-max)
Power consumption	<b>I3005</b> 650 mA/330 mA at 12 V DC (backlight full/off) 350 mA/190 mA at 24 V DC (backlight full/off)
	<b>I3007</b> 680 mA/330 mA at 12 V DC (backlight full/off) 380 mA/200 mA at 24 V DC (backlight full/off)
Recommended fuse rating (12 V / 24 V)	3 A

## ENVIRONMENTAL

Temperature range	-15°C to +55°C (5F to 131F)
Storage temperature	-20°C to +60°C (-4F to 140F)
Waterproof rating	I3005 - IPX6 IPX 7 I3007 - IPX2
Category	Protected
Shock, vibration and humidity	According to IEC 60945

## INTERFACE / CONNECTIVITY

Ethernet	1x RJ45
NMEA 2000®	1x Micro-C (1 LEN)
Memory Card Slot	1 x microSD

## DATA / IO

IEC 61162-2 ports	2x
Digital input	1x
Analog input	1x (Voltage, or Frequency, or Current)
Power output	1x +16 V DC (70 mA Max)

## PHYSICAL

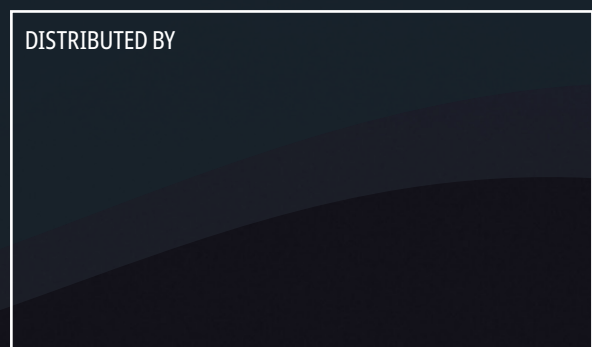
Compass Safe Distance	I3005 - 0.6m (2ft) I3007 - 0.9m (3ft)
Weight (display only)	I3005 - 0.54 kg (1.18 lbs) I3007 - 1.32 kg (2.91 lbs)
Mounting type	Panel mount or bracket

# Global Service & Support

## Includes:

- 2 Year Warranty
- Extended Warranty Options
- Service & Support Hotlines
- 2 Year Onboard Support\*

\* Applies to certified vessels only



**SUPPORT** Navico Americas +1 918 438 8669 / 855-241-3598 (Toll free)  
 Navico Asia Pacific +64 9 925 4595  
 Navico EMEA +31 786 530 004

**SALES** Navico Americas +1 832 377 9578 sales.americas@navico.com  
 Navico Asia Pacific +64 9 925 4500 sales.apacnz@navico.com  
 Navico EMEA +44 1794 510 010 sales.emea@navico.com